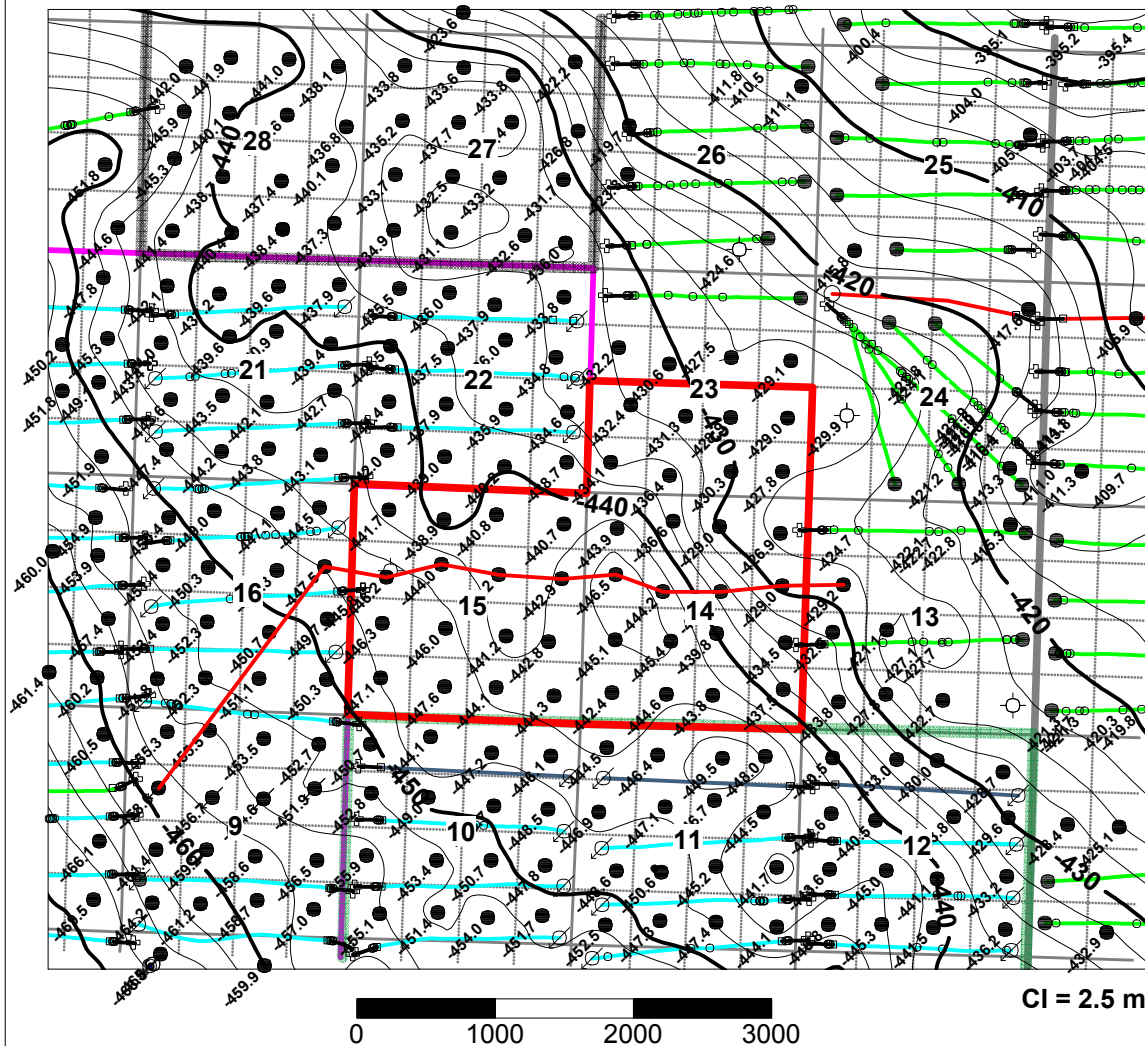


Rge 29W1M



Twp 8

CI = 2.5 m

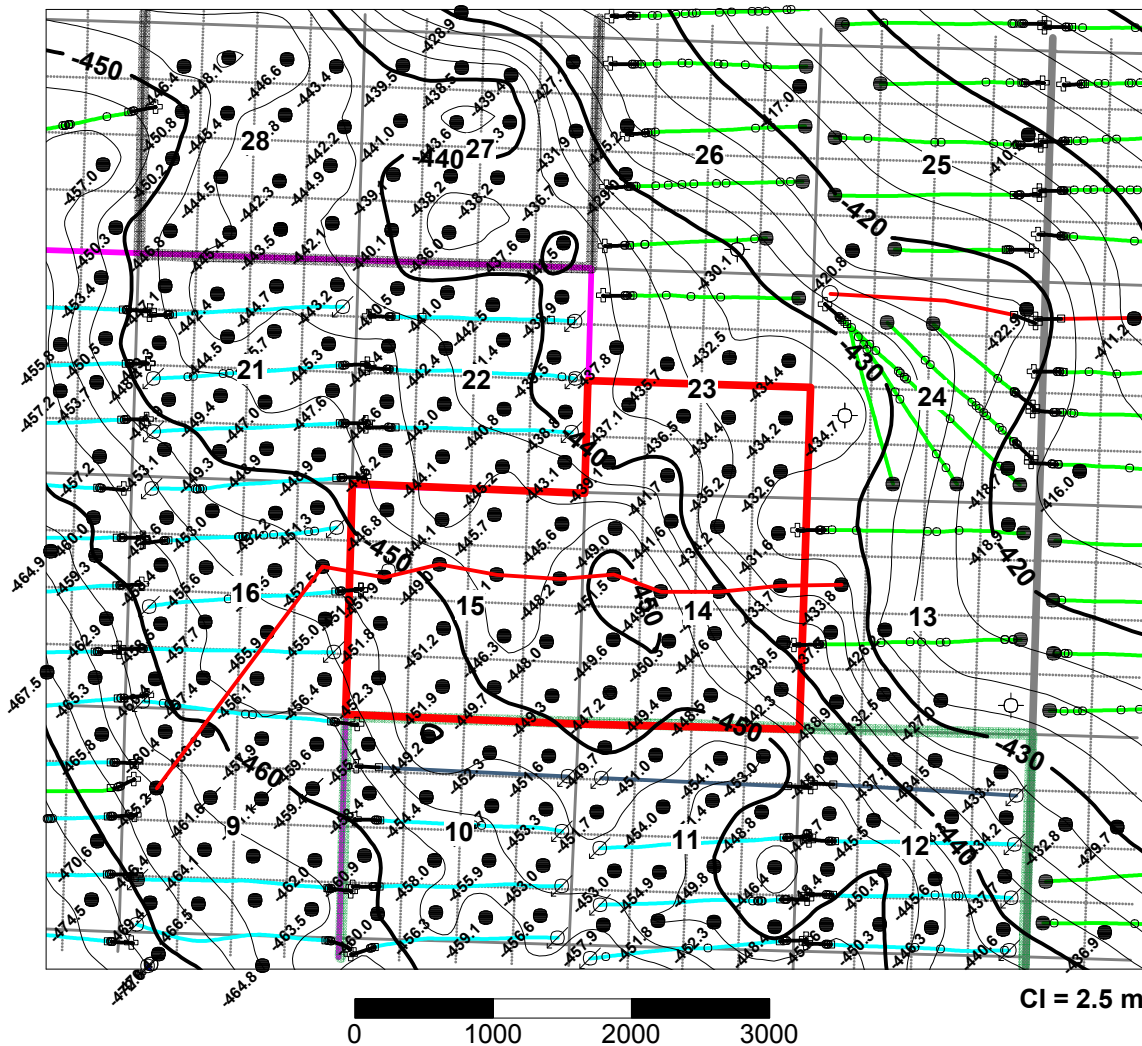
— Line of Cross section

- Oilwell (including producing Hz wells)
- ✦ Abnd Oilwell
- ⊕ Hz Surface
- Intermediate Casing
- Top in Hz wellbore
- ⊘ Injector
- Location

- As Drilled Hz well
- Surveyed Hz well
- As Drilled Hz WIW
- Surveyed Hz WIW
- Unit 7 Boundary
- Unit 1 Boundary
- Unit 3 Boundary
- Unit 6 Boundary

**Proposed Sinclair Unit 7
Top Lyleton B Structure
Appendix 10**

Rge 29W1M



Twp 8

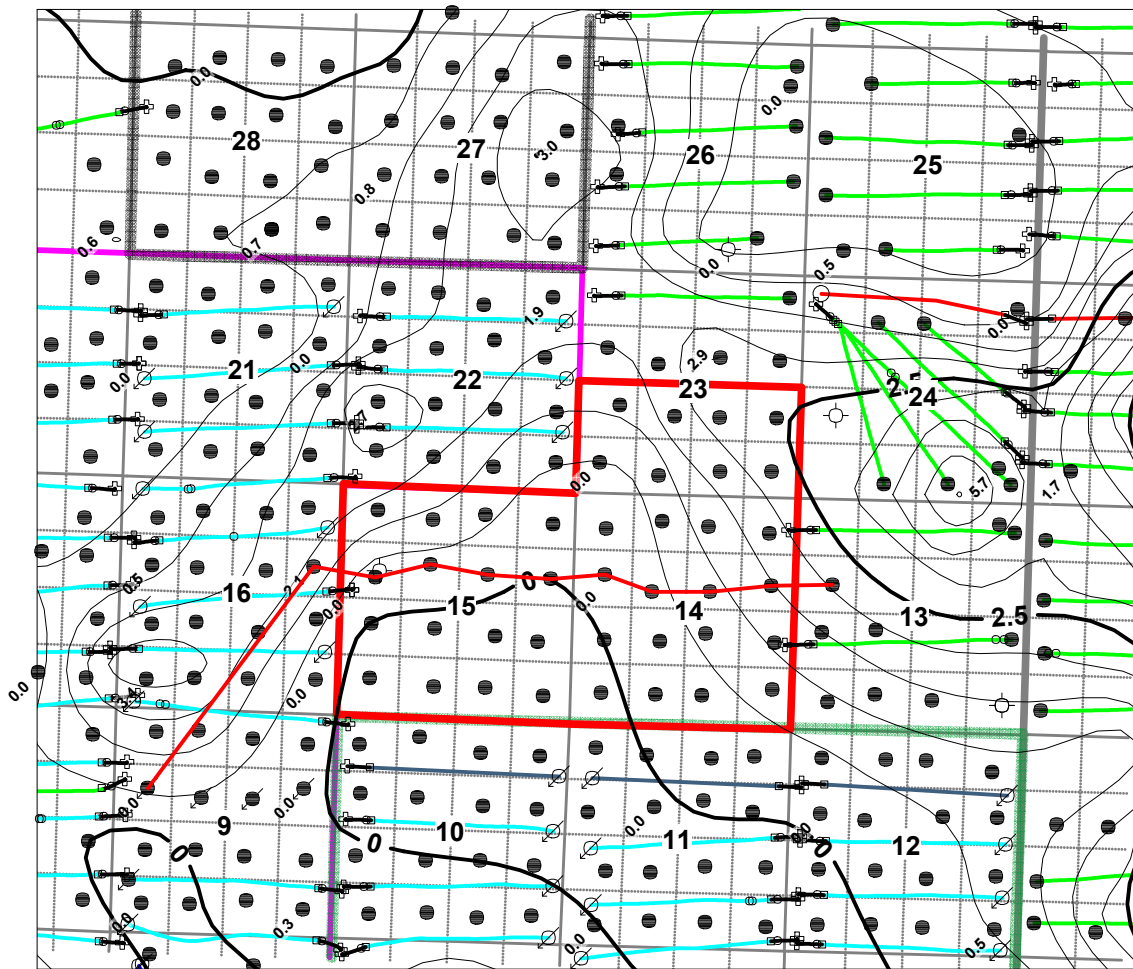
Line of Cross section

- Oilwell (including producing Hz wells)
- ✦ Abnd Oilwell
- ⊕ Hz Surface
- Intermediate Casing
- Top in Hz wellbore
- ⊘ Injector
- Location

- As Drilled Hz well
- Surveyed Hz well
- As Drilled Hz WIW
- Surveyed Hz WIW
- Unit 7 Boundary
- Unit 1 Boundary
- Unit 3 Boundary
- Unit 6 Boundary

**Proposed Sinclair Unit 7
Top Torquay Structure
Appendix 11**

Rge 29W1M



Twp 8

CI = 0.5 md-m

0 1000 2000 3000

— Line of Cross section

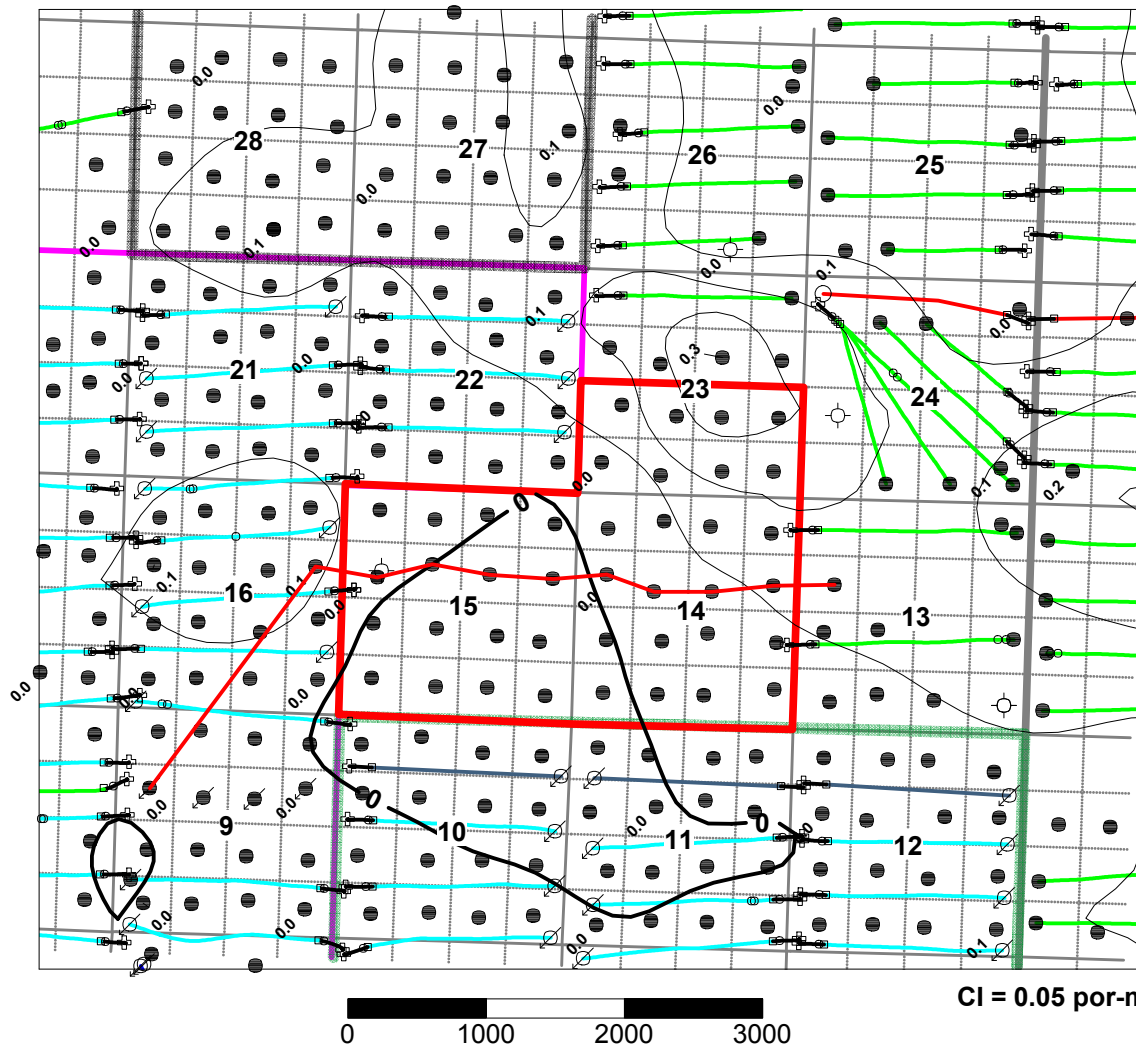
- Oilwell (including producing Hz wells)
- ✦ Abnd Oilwell
- ⊕ Hz Surface
- Intermediate Casing
- Top in Hz wellbore
- ⊗ Injector
- Location

- As Drilled Hz well
- Surveyed Hz well
- As Drilled Hz WIW
- Surveyed Hz WIW
- Unit 7 Boundary
- Unit 1 Boundary
- Unit 3 Boundary
- Unit 6 Boundary

**Proposed Sinclair Unit 7
Middle Bakken k-h
Appendix 12**

Barry W. Larson
May 15, 2011

Rge 29W1M



Twp 8

CI = 0.05 por-m

0 1000 2000 3000

— Line of Cross section

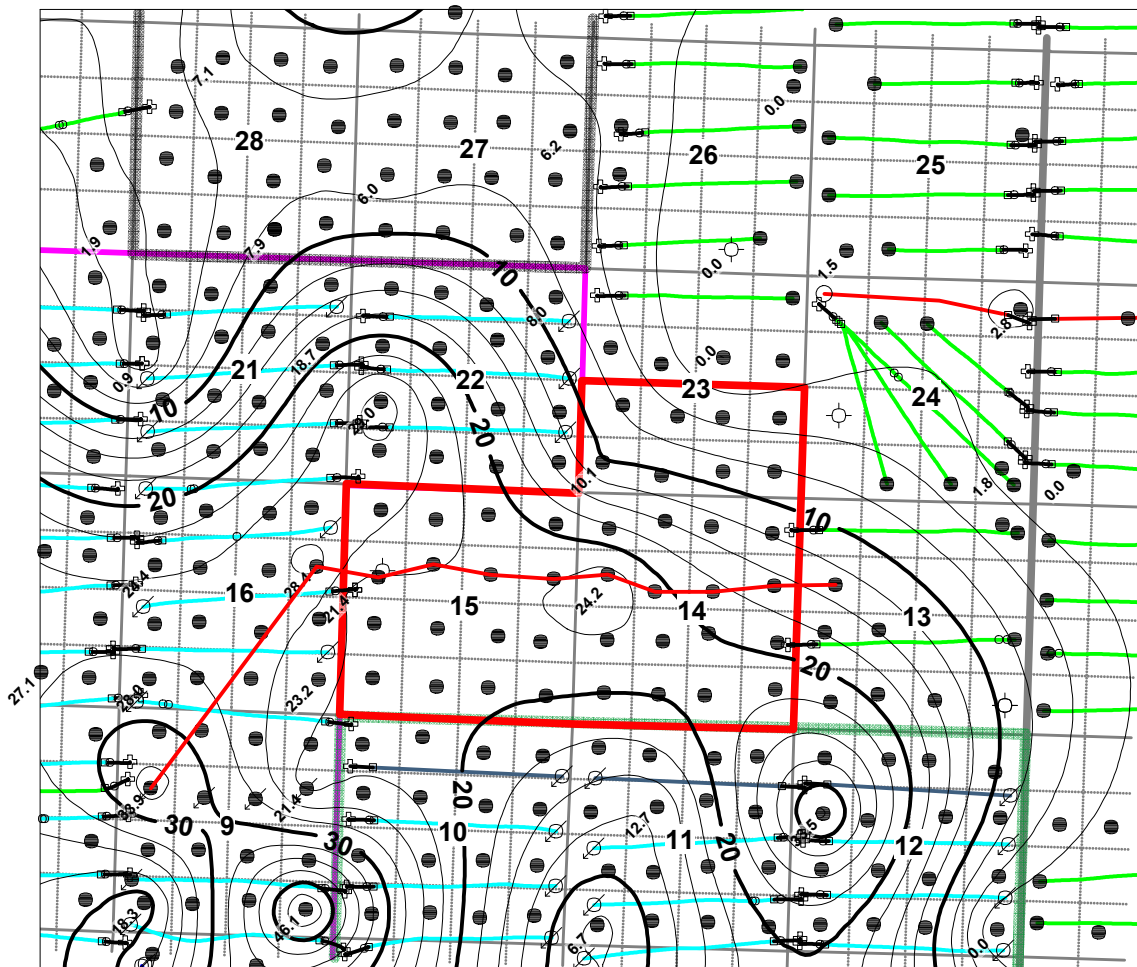
- Oilwell (including producing Hz wells)
- ⦿ Abnd Oilwell
- ⊕ Hz Surface
- Intermediate Casing
- Top in Hz wellbore
- ⊗ Injector
- Location

- As Drilled Hz well
- Surveyed Hz well
- As Drilled Hz WIW
- Surveyed Hz WIW
- Unit 7 Boundary
- Unit 1 Boundary
- Unit 3 Boundary
- Unit 6 Boundary

**Proposed Sinclair Unit 7
Middle Bakken Phi-h
Appendix 13**

Barry W. Larson
May 14, 2011

Rge 29W1M



Twp 8

CI = 2.5 md-m

0 1000 2000 3000

Line of Cross section

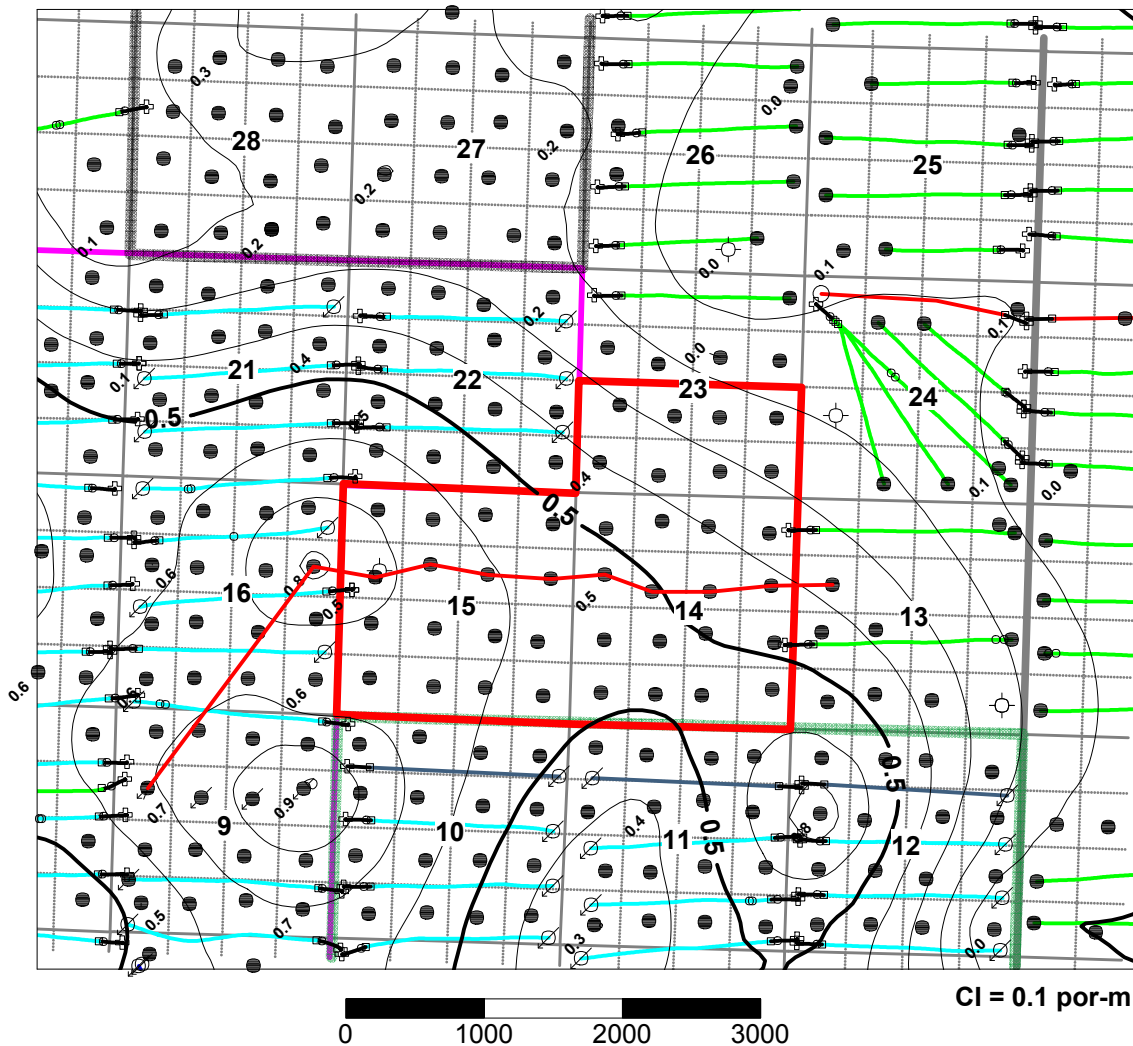
- Oilwell (including producing Hz wells)
- ✦ Abnd Oilwell
- ⊕ Hz Surface
- Intermediate Casing
- Top in Hz wellbore
- ⊗ Injector
- Location

- As Drilled Hz well
- Surveyed Hz well
- As Drilled Hz WIW
- Surveyed Hz WIW
- Unit 7 Boundary
- Unit 1 Boundary
- Unit 3 Boundary
- Unit 6 Boundary

Proposed Sinclair Unit 7
Lyleton A k-h
Appendix 14

Barry W. Larson
 May 15, 2011

Rge 29W1M



Twp 8

CI = 0.1 por-m

— Line of Cross section

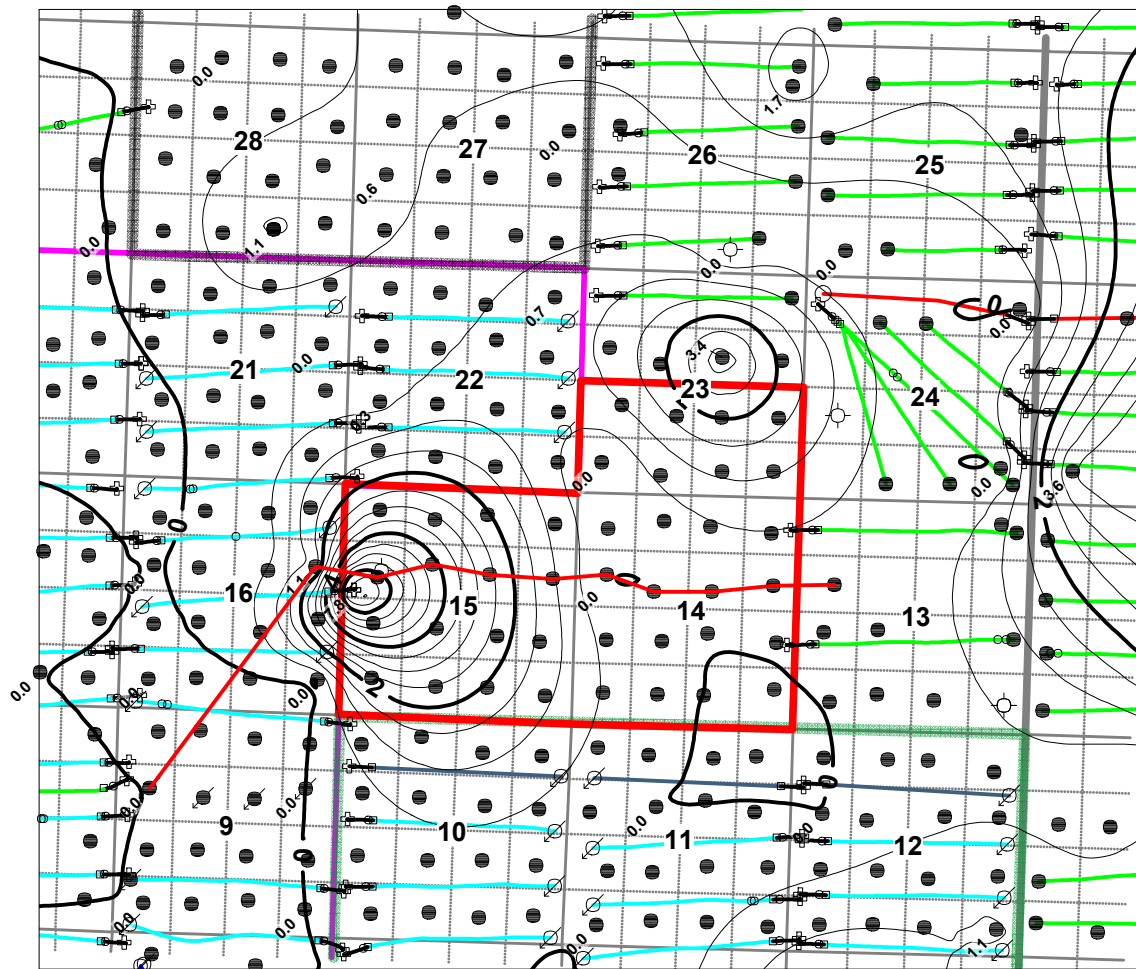
- Oilwell (including producing Hz wells)
- ✦ Abnd Oilwell
- ⊕ Hz Surface
- Intermediate Casing
- Top in Hz wellbore
- ⊗ Injector
- Location

- As Drilled Hz well
- Surveyed Hz well
- As Drilled Hz WIW
- Surveyed Hz WIW
- Unit 7 Boundary
- Unit 1 Boundary
- Unit 3 Boundary
- Unit 6 Boundary

**Proposed Sinclair Unit 7
Lyleton A phi-h
Appendix 15**

Barry W. Larson
May 14, 2011

Rge 29W1M



Twp 8

0 1000 2000 3000

CI = 0.5 md-m

Line of Cross section

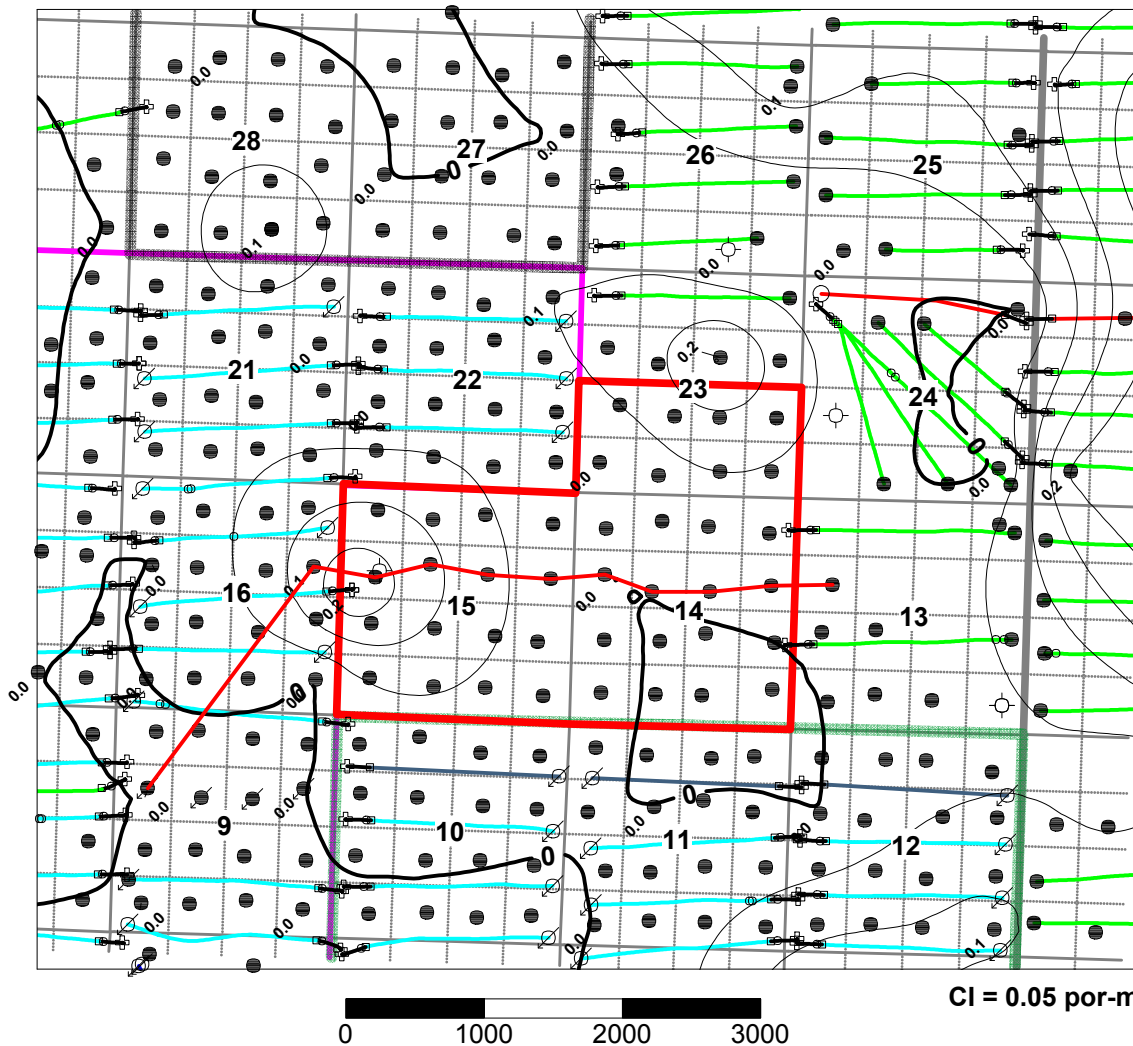
- Oilwell (including producing Hz wells)
- ✦ Abnd Oilwell
- ⊕ Hz Surface
- Intermediate Casing
- Top in Hz wellbore
- ⊗ Injector
- Location

- As Drilled Hz well
- Surveyed Hz well
- As Drilled Hz WIW
- Surveyed Hz WIW
- Unit 7 Boundary
- Unit 1 Boundary
- Unit 3 Boundary
- Unit 6 Boundary

**Proposed Sinclair Unit 7
Lyleton B k-h
Appendix 16**

Barry W. Larson
May 15, 2011

Rge 29W1M



Twp 8

— Line of Cross section

- Oilwell (including producing Hz wells)
- ✦ Abnd Oilwell
- ⊕ Hz Surface
- Intermediate Casing
- Top in Hz wellbore
- ⊗ Injector
- Location

- As Drilled Hz well
- Surveyed Hz well
- As Drilled Hz WIW
- Surveyed Hz WIW
- Unit 7 Boundary
- Unit 1 Boundary
- Unit 3 Boundary
- Unit 6 Boundary

Proposed Sinclair Unit 7
Lyleton B phi-h
Appendix 17

Barry W. Larson
 May 14, 2011

Appendix 18

Proposed Sinclair Unit No. 7

LYLETON / THREE FORKS FORMATION ROCK & FLUID PARAMETERS

Formation Pressure	9500 kPa	Initial Average Reservoir Pressure
Formation Temperature	30°C	
Saturation Pressure	2,034 Kpa	Bubble Point
GOR	6 - 10 m3/m3	Gas Oil Ratio
API Oil Gravity	40	
Swi (fraction)	0.40	Initial Water Saturation
Produced Water Specific Gravity	1.08	
Produced Water pH	7.1 - 7.3	
Produced Water TDS	125,000	
Wettability	Moderately oil-wet	
Average Air Permeability*	Middle Bakken Lyleton A Lyleton B	1.14 mD 3.35 mD 3.70 mD
		Wt. Average Core Data
Average Porosity (fraction)*	Middle Bakken Lyleton A Lyleton B	0.160 0.162 0.160
		Wt. Average Core Data

* Wt ave from all MBKKN/Lyleton cores in Sections 14, 15 and S23-8-28W1M.

EXHIBIT 'A': TRACT PARTICIPATION

Appendix 19

Proposed SINCLAIR UNIT NO. 7

Attached to and made part of an Agreement Entitled
Sinclair Unit No. 7 - Unit Agreement

Working Interest					Royalty Interest		Tract Participation %
Tract No.	Land Description	Owner	Share (%)		Owner	Share (%)	
1	LSD 1-14-8-29 WPM	Tundra Oil & Gas Partnership	100%	0.029009027	HER MAJESTY THE QUEEN IN RIGHT OF THE PROVINCE OF MANITOBA	100%	2.900902656
2	LSD 2-14-8-29 WPM	Tundra Oil & Gas Partnership	100%	0.027769720	HER MAJESTY THE QUEEN IN RIGHT OF THE PROVINCE OF MANITOBA	100%	2.776972032
3	LSD 3-14-8-29 WPM	Tundra Oil & Gas Partnership	100%	0.023326208	HER MAJESTY THE QUEEN IN RIGHT OF THE PROVINCE OF MANITOBA	100%	2.332620795
4	LSD 4-14-8-29 WPM	Tundra Oil & Gas Partnership	100%	0.025807461	HER MAJESTY THE QUEEN IN RIGHT OF THE PROVINCE OF MANITOBA	100%	2.580746124
5	LSD 5-14-8-29 WPM	Tundra Oil & Gas Partnership	100%	0.021460974	HER MAJESTY THE QUEEN IN RIGHT OF THE PROVINCE OF MANITOBA	100%	2.146097402
6	LSD 6-14-8-29 WPM	Tundra Oil & Gas Partnership	100%	0.026631351	HER MAJESTY THE QUEEN IN RIGHT OF THE PROVINCE OF MANITOBA	100%	2.663135120
7	LSD 7-14-8-29 WPM	Tundra Oil & Gas Partnership	100%	0.027463054	HER MAJESTY THE QUEEN IN RIGHT OF THE PROVINCE OF MANITOBA	100%	2.746305444
8	LSD 8-14-8-29 WPM	Tundra Oil & Gas Partnership	100%	0.022995537	HER MAJESTY THE QUEEN IN RIGHT OF THE PROVINCE OF MANITOBA	100%	2.299553685
9	LSD 9-14-8-29 WPM	Tundra Oil & Gas Partnership	100%	0.011114860	HER MAJESTY THE QUEEN IN RIGHT OF THE PROVINCE OF MANITOBA	100%	1.111486049
10	LSD 10-14-8-29 WPM	Tundra Oil & Gas Partnership	100%	0.018236966	HER MAJESTY THE QUEEN IN RIGHT OF THE PROVINCE OF MANITOBA	100%	1.823696555
11	LSD 11-14-8-29 WPM	Tundra Oil & Gas Partnership	100%	0.021897109	HER MAJESTY THE QUEEN IN RIGHT OF THE PROVINCE OF MANITOBA	100%	2.189710907
12	LSD 12-14-8-29 WPM	Tundra Oil & Gas Partnership	100%	0.031730140	HER MAJESTY THE QUEEN IN RIGHT OF THE PROVINCE OF MANITOBA	100%	3.173014026
13	LSD 13-14-8-29 WPM	Tundra Oil & Gas Partnership	100%	0.035134680	HER MAJESTY THE QUEEN IN RIGHT OF THE PROVINCE OF MANITOBA	100%	3.513468030
14	LSD 14-14-8-29 WPM	Tundra Oil & Gas Partnership	100%	0.015802586	HER MAJESTY THE QUEEN IN RIGHT OF THE PROVINCE OF MANITOBA	100%	1.580258613
15	LSD 15-14-8-29 WPM	Tundra Oil & Gas Partnership	100%	0.013208006	HER MAJESTY THE QUEEN IN RIGHT OF THE PROVINCE OF MANITOBA	100%	1.320800619
16	LSD 16-14-8-29 WPM	Tundra Oil & Gas Partnership	100%	0.012490667	HER MAJESTY THE QUEEN IN RIGHT OF THE PROVINCE OF MANITOBA	100%	1.249066731
17	LSD 1-15-8-29 WPM	Tundra Oil & Gas Partnership	100%	0.024862528	5250576 Manitoba Ltd.	100%	2.486252756
18	LSD 2-15-8-29 WPM	Tundra Oil & Gas Partnership	100%	0.033160685	5250576 Manitoba Ltd.	100%	3.316068531
19	LSD 3-15-8-29 WPM	Tundra Oil & Gas Partnership	100%	0.031731093	FA&J Resources Ltd.	50%	3.173109281
					4996420 Manitoba Ltd.	25%	
					4996438 Manitoba Ltd.	25%	
20	LSD 4-15-8-29 WPM	Tundra Oil & Gas Partnership	100%	0.036262253	FA&J Resources Ltd.	49.700024%	3.626225334
					4996420 Manitoba Ltd.	24.850012%	
					4996438 Manitoba Ltd.	24.850012%	
					Naomi M. Isaac	0.599952%	
21	LSD 5-15-8-29 WPM	Tundra Oil & Gas Partnership	100%	0.032642683	FA&J Resources Ltd.	44.3031902%	3.264268305
					4996420 Manitoba Ltd.	22.1515951%	
					4996438 Manitoba Ltd.	22.1515951%	
					Naomi M. Isaac	11.3936196%	

Working Interest					Royalty Interest		Tract Participation %
Tract No.	Land Description	Owner	Share (%)		Owner	Share (%)	
22	LSD 6-15-8-29 WPM	Tundra Oil & Gas Partnership	100%	0.029143128	FA&J Reources Ltd.	50%	2.914312780
					4996420 Manitoba Ltd.	25%	
					4996438 Manitoba Ltd.	25%	
23	LSD 7-15-8-29 WPM	Tundra Oil & Gas Partnership	100%	0.032533088	5250576 Manitoba Ltd.	100%	3.253308802
24	LSD 8-15-8-29 WPM	Tundra Oil & Gas Partnership	100%	0.024686081	5250576 Manitoba Ltd.	100%	2.468608132
25	LSD 9-15-8-29 WPM	Tundra Oil & Gas Partnership	100%	0.023123267	Lindsay Lee Reid	50%	2.312326730
					Bralex Resources Ltd.	50%	
26	LSD 10-15-8-29 WPM	Tundra Oil & Gas Partnership	100%	0.026458297	Lindsay Lee Reid	50%	2.645829726
					Bralex Resources Ltd.	50%	
27	LSD 11-15-8-29 WPM	Tundra Oil & Gas Partnership	100%	0.031496191	FA&J Reources Ltd.	50%	3.149619108
					4996420 Manitoba Ltd.	25%	
					4996438 Manitoba Ltd.	25%	
28	LSD 12-15-8-29 WPM	Tundra Oil & Gas Partnership	100%	0.033346315	FA&J Reources Ltd.	50%	3.334631486
					4996420 Manitoba Ltd.	25%	
					4996438 Manitoba Ltd.	25%	
29	LSD 13-15-8-29 WPM	Tundra Oil & Gas Partnership	100%	0.030720075	FA&J Reources Ltd.	50%	3.072007542
					4996420 Manitoba Ltd.	25%	
					4996438 Manitoba Ltd.	25%	
30	LSD 14-15-8-29 WPM	Tundra Oil & Gas Partnership	100%	0.033289594	FA&J Reources Ltd.	50%	3.328959439
					4996420 Manitoba Ltd.	25%	
					4996438 Manitoba Ltd.	25%	
31	LSD 15-15-8-29 WPM	Tundra Oil & Gas Partnership	94%	0.024967463	Lindsay Lee Reid	50%	2.656113108
		Eymann Investments Corp	6%	0.001593668	Bralex Resources Ltd.	50%	
32	LSD 16-15-8-29 WPM	Tundra Oil & Gas Partnership	94%	0.016030600	Lindsay Lee Reid	50%	1.705382933
		Eymann Investments Corp	6%	0.001023230	Bralex Resources Ltd.	50%	
33	LSD 1-23-8-29 WPM	Tundra Oil & Gas Partnership	100%	0.013923191	5250596 Manitoba Ltd.	50%	1.392319127
					Lynkato Oil Incorporated	16.66666%	
					Brenda Lynn Wohlgemuth	16.66667%	
					Dennis Lee Wohlgemuth	16.66667%	
34	LSD 2-23-8-29 WPM	Tundra Oil & Gas Partnership	100%	0.014097255	5250596 Manitoba Ltd.	50%	1.409725510
					Lynkato Oil Incorporated	16.66666%	
					Brenda Lynn Wohlgemuth	16.66667%	
					Dennis Lee Wohlgemuth	16.66667%	
35	LSD 3-23-8-29 WPM	Tundra Oil & Gas Partnership	100%	0.030393309	Petrobakken Energy Ltd.	100%	3.039330890
36	LSD 4-23-8-29 WPM	Tundra Oil & Gas Partnership	100%	0.032801420	Petrobakken Energy Ltd.	100%	3.280141999
37	LSD 5-23-8-29 WPM	Tundra Oil & Gas Partnership	100%	0.022495073	Petrobakken Energy Ltd.	100%	2.249507336
38	LSD 6-23-8-29 WPM	Tundra Oil & Gas Partnership	100%	0.026140737	Petrobakken Energy Ltd.	100%	2.614073674
39	LSD 7-23-8-29 WPM	Tundra Oil & Gas Partnership	100%	0.015320241	5250596 Manitoba Ltd.	50%	1.532024096
					Lynkato Oil Incorporated	16.66666%	
					Brenda Lynn Wohlgemuth	16.66667%	
					Dennis Lee Wohlgemuth	16.66667%	
40	LSD 8-23-8-29 WPM	Tundra Oil & Gas Partnership	100%	0.013680186	5250596 Manitoba Ltd.	50%	1.368018587
					Lynkato Oil Incorporated	16.66666%	
					Brenda Lynn Wohlgemuth	16.66667%	
					Dennis Lee Wohlgemuth	16.66667%	

Working Interest		100.000000000%	100.000000000
Tundra Oil & Gas Partnership	WI =	99.738310238%	
Eymann Investments Corp	WI =	0.261689762%	
Total		100.000000000%	

TUNDRA OIL & GAS LIMITED

Appendix 20

50% OOIP and 50% 1st 2160 hours Production Method

SINCLAIR UNIT NO. 7

DETERMINATION OF TRACT FACTORS BASED ON FIRST 90 PRODUCING DAYS

Section	Well / LSD	First 90 Days of Production			Tract Factor 100% Production (%)	Tract Factor 50% Production (%)
		Oil Volume (m ³)	Produced (hours)	Produced (days)		
14-8-29	1-14-8-29	684.9	2,160.0	90	3.232648612	1.616324306
	2-14-8-29	682.5	2,160.0	90	3.221320891	1.610660445
	3-14-8-29	523.0	2,160.0	90	2.468499378	1.234249689
	4-14-8-29	646.8	2,160.0	90	3.052821029	1.526410514
	5-14-8-29	462.8	2,160.0	90	2.184362356	1.092181178
	6-14-8-29	682.6	2,160.0	90	3.221792879	1.610896440
	7-14-8-29	654.4	2,160.0	90	3.088692148	1.544346074
	8-14-8-29	565.5	2,160.0	90	2.669094452	1.334547226
	9-14-8-29	185.4	2,160.0	90	0.875066510	0.437533255
	10-14-8-29	318.9	2,160.0	90	1.505171036	0.752585518
	11-14-8-29	489.1	2,160.0	90	2.308495308	1.154247654
	12-14-8-29	811.4	2,160.0	90	3.829713950	1.914856975
	13-14-8-29	918.7	2,160.0	90	4.336157512	2.168078756
	14-14-8-29	219.3	2,160.0	90	1.035070581	0.517535290
	15-14-8-29	172.8	2,160.0	90	0.815595971	0.407797985
	16-14-8-29	122.5	2,160.0	90	0.578185801	0.289092900
Total		8140.6				
% of Total Unit		38.4			38.422688414	19.211344207
15-8-29	1-15-8-29	558.6	2,160.0	90	2.636527252	1.318263626
	2-15-8-29	802.0	2,160.0	90	3.785347039	1.892673520
	3-15-8-29	654.7	2,160.0	90	3.090108113	1.545054057
	4-15-8-29	854.7	2,160.0	90	4.034084931	2.017042465
	5-15-8-29	678.4	2,160.0	90	3.201969366	1.600984683
	6-15-8-29	498.3	2,160.0	90	2.351918241	1.175959121
	7-15-8-29	675.0	2,160.0	90	3.185921760	1.592960880
	8-15-8-29	495.5	2,160.0	90	2.338702566	1.169351283
	9-15-8-29	516.0	2,160.0	90	2.435460190	1.217730095
	10-15-8-29	559.4	2,160.0	90	2.640303159	1.320151580
	11-15-8-29	620.4	2,160.0	90	2.928216089	1.464108044
	12-15-8-29	544.9	2,160.0	90	2.571864840	1.285932420
	13-15-8-29	504.7	2,160.0	90	2.382125500	1.191062750
	14-15-8-29	737.8	2,160.0	90	3.482330481	1.741165240
	15-15-8-29	627.2	2,160.0	90	2.960311301	1.480155650
	16-15-8-29	325.1	2,160.0	90	1.534434317	0.767217159
Total		9652.7				
% of Total Unit		45.6			45.559625145	22.779812572
23-8-29	1-23-8-29	154.6	2,160.0	90	0.729648404	0.364824202
	2-23-8-29	137.1	2,160.0	90	0.647033177	0.323516588
	3-23-8-29	807.0	2,160.0	90	3.808946460	1.904473230
	4-23-8-29	913.8	2,160.0	90	4.313215504	2.156607752
	5-23-8-29	506.1	2,160.0	90	2.388665910	1.194332955
	6-23-8-29	601.4	2,160.0	90	2.838487721	1.419243860
	7-23-8-29	131.2	2,160.0	90	0.619029655	0.309514827
	8-23-8-29	142.5	2,160.0	90	0.672659610	0.336329805
Total		3393.7				
% of Total Unit		16.0			16.017686441	8.008843221
Total Production		21,187.0	m ³		Tract Factors 100% Production (%)	Tract Factors 50% Production (%)
		100.0000	%		100.000000000	50.000000000

TUNDRA OIL & GAS LIMITED

Appendix 21

50% of OOIP and 50% 1st 2160 hours Production Method

SINCLAIR UNIT NO. 7

TRACT FACTORS BASED ON OIL-IN-PLACE (OOIP) & PRODUCTION FIRST 90 PRODUCING DAYS (2160 HRS)

Determination of Working Interests in Proposed Unit

Section	OOIP (Mbbbl)	Tract Factor 100% OOIP	Tract Factor 50% OOIP	Well	Tract Factor 100% Production	Tract Factor 50% Production	TOTAL Tract Factor
Section 14-8-29							
1-14-8-29	306.3	2.569156699	1.284578350	1-14-8-29	3.232648612	1.616324306	2.900902656
2-14-8-29	278.1	2.332623174	1.166311587	2-14-8-29	3.221320891	1.610660445	2.776972032
3-14-8-29	261.9	2.196742212	1.098371106	3-14-8-29	2.468499378	1.234249689	2.332620795
4-14-8-29	251.4	2.108671218	1.054335609	4-14-8-29	3.052821029	1.526410514	2.580746124
5-14-8-29	251.3	2.107832447	1.053916224	5-14-8-29	2.184362356	1.092181178	2.146097402
6-14-8-29	250.9	2.104477362	1.052238681	6-14-8-29	3.221792879	1.610896440	2.663135120
7-14-8-29	286.6	2.403918740	1.201959370	7-14-8-29	3.088692148	1.544346074	2.746305444
8-14-8-29	230.1	1.930012917	0.965006459	8-14-8-29	2.669094452	1.334547226	2.299553685
9-14-8-29	160.7	1.347905588	0.673952794	9-14-8-29	0.875066510	0.437533255	1.111486049
10-14-8-29	255.4	2.142222073	1.0711111037	10-14-8-29	1.505171036	0.752585518	1.823696555
11-14-8-29	246.9	2.070926507	1.035463253	11-14-8-29	2.308495308	1.154247654	2.189710907
12-14-8-29	300.0	2.516314103	1.258157052	12-14-8-29	3.829713950	1.914856975	3.173014026
13-14-8-29	320.8	2.690778548	1.345389274	13-14-8-29	4.336157512	2.168078756	3.513468030
14-14-8-29	253.4	2.125446646	1.062723323	14-14-8-29	1.035070581	0.517535290	1.580258613
15-14-8-29	217.7	1.826005267	0.913002634	15-14-8-29	0.815595971	0.407797985	1.320800619
16-14-8-29	228.9	1.919947661	0.959973830	16-14-8-29	0.578185801	0.289092900	1.249066731
Total Section 14-8-29	4100.4	34.392981161	17.196490581		38.422688414	19.211344207	36.407834788
Section 15-8-29							
1-15-8-29	278.5	2.335978259	1.167989130	1-15-8-29	2.636527252	1.318263626	2.486252756
2-15-8-29	339.4	2.846790022	1.423395011	2-15-8-29	3.785347039	1.892673520	3.316068531
3-15-8-29	388.2	3.256110449	1.628055225	3-15-8-29	3.090108113	1.545054057	3.173109281
4-15-8-29	383.7	3.218365738	1.609182869	4-15-8-29	4.034084931	2.017042465	3.626225334
5-15-8-29	396.6	3.326567244	1.663283622	5-15-8-29	3.201969366	1.600984683	3.264268305
6-15-8-29	414.5	3.476707319	1.738353660	6-15-8-29	2.351918241	1.175959121	2.914312780
7-15-8-29	395.9	3.320695845	1.660347922	7-15-8-29	3.185921760	1.592960880	3.253308802
8-15-8-29	309.8	2.598513697	1.299256849	8-15-8-29	2.338702566	1.169351283	2.468608132
9-15-8-29	261.0	2.189193270	1.094596635	9-15-8-29	2.435460190	1.217730095	2.312326730
10-15-8-29	316.1	2.651356293	1.325678147	10-15-8-29	2.640303159	1.320151580	2.645829726
11-15-8-29	401.9	3.371022127	1.685511063	11-15-8-29	2.928216089	1.464108044	3.149619108
12-15-8-29	488.5	4.097398131	2.048699066	12-15-8-29	2.571864840	1.285932420	3.334631486
13-15-8-29	448.5	3.761889584	1.880944792	13-15-8-29	2.382125500	1.191062750	3.072007542
14-15-8-29	378.6	3.175588398	1.587794199	14-15-8-29	3.482330481	1.741165240	3.328959439
15-15-8-29	280.4	2.351914915	1.175957458	15-15-8-29	2.960311301	1.480155650	2.656113108
16-15-8-29	223.7	1.876331550	0.938165775	16-15-8-29	1.534434317	0.767217159	1.705382933
Total Section 15-8-29	5705.3	47.854422841	23.927211421		45.559625145	22.779812572	46.707023993
Section 23-8-29							
1-23-8-29	245.0	2.054989851	1.027494925	1-23-8-29	0.729648404	0.364824202	1.392319127
2-23-8-29	259.0	2.172417842	1.086208921	2-23-8-29	0.647033177	0.323516588	1.409725510
3-23-8-29	270.6	2.269715321	1.134857660	3-23-8-29	3.808946460	1.904473230	3.039330890
4-23-8-29	267.9	2.247068494	1.123534247	4-23-8-29	4.313215504	2.156607752	3.280141999
5-23-8-29	251.6	2.110348761	1.055174381	5-23-8-29	2.388665910	1.194332955	2.249507336
6-23-8-29	284.9	2.389659627	1.194829813	6-23-8-29	2.838487721	1.419243860	2.614073674
7-23-8-29	291.5	2.445018537	1.222509268	7-23-8-29	0.619029655	0.309514827	1.532024096
8-23-8-29	246.0	2.063377565	1.031688782	8-23-8-29	0.672659610	0.336329805	1.368018587
Total Section	2116.5	17.752595997	8.876297999		16.017686441	8.008843221	16.885141219
Total	11922.2	100.000000000	50.000000000		100.000000000	50.000000000	100.000000000

Porosity-Permeability Comparison
All Zones
Sinclair Unit 7 and Units 1 and 3
Twp 8 Rge 29W1M

